

# REMINGTON®

Model HC-822A

Use and Care Guide



A Superior Cut Every Time

Register Your New Product Today!

By registering your new Remington® product you will receive these important benefits: Proof of ownership • Product protection • Product registration • Special offers

Register online at: [www.RemingtonProducts.com](http://www.RemingtonProducts.com)

## IMPORTANT SAFETY INSTRUCTIONS

When using an electrical appliance, basic precautions should always be observed, including the following. Read all instructions before using this appliance.

### DANGER

To reduce the risk of electric shock:

- Do not reach for an appliance that has fallen into water. Unplug it immediately.
- Do not use while bathing or in the shower.
- Do not place or drop into water or other liquid.
- Do not place or store this appliance where it can fall or be pulled into a tub or sink.
- Always unplug this appliance from the electrical outlet immediately after using.
- Unplug this appliance before cleaning it.

### WARNING

To reduce the risk of burns, fire, electric shock or injury to persons:

- This appliance is for household use only.
- An appliance should never be left unattended when it's plugged in.
- Close supervision is necessary when this appliance is used by, on, or near children or persons

with special needs.

- Use this appliance only for its intended use as described in this manual. Do not use attachments not recommended by Spectrum Brands, Inc.
- Keep the cord away from heated surfaces.
- Never operate this appliance if it has a damaged cord or plug, if it is not working properly, if it has been dropped or damaged, or if it has been dropped into water. If any of these things happen, return the appliance to a Remington authorized service center for examination and repair.
- Never drop or insert any object into any of the appliance's openings.
- Do not use outdoors or operate where aerosol (spray) products are being used, or where oxygen is being administered.

- Always store this appliance and cord in a moisture-free area. Do not store it in temperatures exceeding 140°F (60°C).
- Do not plug or unplug this appliance when your hands are wet.
- Do not use an extension cord or a voltage converter with this appliance.

- Always attach the plug to the appliance, then to the outlet. To disconnect, turn all controls to OFF, then remove plug from outlet. Detach removable power cords from appliances for storage.

- Do not use this appliance with a damaged or broken cutting unit, as injury may occur. Always make certain blades are aligned properly.

- This clipper is designed for use with 120 Volts AC, 60 HZ electrical outlets. Do not connect the clipper to a higher voltage than indicated, as it may result in personal injury and/or damage to the clipper.

- This power unit is intended to be correctly oriented in a vertical or floor mount position.
- This appliance has a polarized plug (one blade is wider than the other). As a safety feature, this plug will fit in a polarized outlet only one way. If the plug does not fit fully in the outlet, reverse the plug. If it still does not fit, contact a qualified electrician. Do not attempt to defeat this safety feature.

## SAVE THESE INSTRUCTIONS

## Product Features

### HC-822

The Remington® HC-822 hair clipper provides a quick and easy way to obtain professional-looking haircuts at home. Developed to combine professional grade titanium-coated blades with a powerful, low noise motor, this hair clipper enables you to achieve customized, modern looks and traditional hairstyles. To help you create those styles, and to extend the life of your hair clipper, please read all instructions before using.

- Premium Rubberized Clipper
- 1" (25mm) Guide Comb
- 7/8" (22mm) Guide Comb
- 3/4" (18mm) Guide Comb
- 5/8" (16mm) Guide Comb
- 1/2" (12mm) Guide Comb
- 3/8" (9mm) Guide Comb
- 1/4" (6mm) Guide Comb
- 1/8" (3mm) Guide Comb
- Right Ear Taper Guide Comb
- Left Ear Taper Guide Comb
- Blade Guard
- Barber Scissors
- Neck Brush
- Styling Comb
- Cleaning Brush
- Sectioning Clip
- Sectioning Clip
- Sectioning Clip
- Sectioning Clip
- Sectioning Clip
- Sectioning Clip
- Cape
- Storage Case
- Styling Guide



## How to Use

### Line Cord Safety Tips

NOTE: This appliance has a polarized plug (one blade is wider than the other). As a safety feature, this plug will fit in a polarized outlet only one way. If the plug does not fit fully in the outlet, reverse the plug. If it still does not fit, contact a qualified electrician. Do not attempt to defeat this safety feature.

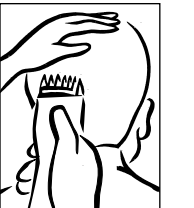
- To insert plug, grasp it firmly and guide it into outlet.
- To disconnect the appliance, grasp the plug and remove it from outlet. Do not pull or yank on the cord or appliance. **Do not wrap the cord around the appliance.**

### Blade Care

The life of your clippers will depend on frequency of use, care, hair type and condition. The HC-822 blades are lubed for life and do not require additional oiling.

### Before Cutting Hair

- Make sure your hair clipper is running smoothly with a slight vibration.
- Place the cape around the neck of the person whose hair is being trimmed or cut.
- This person should be seated so that the top of their head is at your eye level.
- Comb the hair as it is normally styled.
- Comb out all knots and tangles.



### How to Give a Haircut

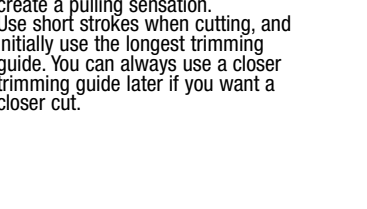
- Start at the back of the head. Holding the clipper as shown, lightly stroke upward making sure you are taking off the desired amount of hair. Work your way up to the crown of the head in layers. When completed, comb the area to remove any loose hair and to determine whether you need any further cutting.
- Repeat the same procedure for each side of the head. Make sure the length of the hair is trimmed to the same length on both sides of the head.
- To cut the hair at the top of the head, hold the hair between your fingers and cut a small amount at a time. Cut from the front to the back.
- Remove the trimming guide and replace with either the left or right ear guide. The shorter guide teeth are designed to be toward the ear. Move the clipper from the back of the head to the front. This creates a tapered effect around the ears and back of the neck.
- The final trim can be made with the hair clipper or the included scissors. Make sure to check over the entire head for any uneven areas. For styled hair or

### To Attach Trimming Guides

- Select the trimming guide that matches the length you want the hair to be after the cut. The trimming guides are numbered and marked with 1/8" (3mm), 1/4" (6mm), 3/8" (9mm), 1/2" (12mm), 5/8" (16mm), 3/4" (18mm), 7/8" (22mm), and 1" (25mm).
- While the clipper is off, hold the trimming guide with the teeth up. Slide the trimming guide onto the blades until it locks into place.

### Giving a Comfortable, Even Cut

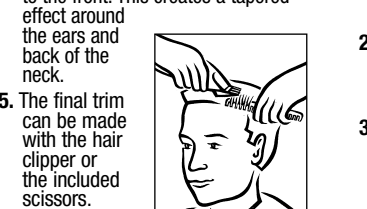
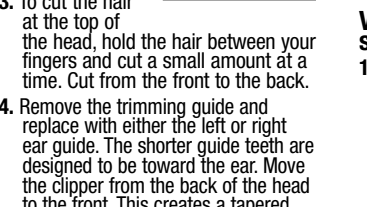
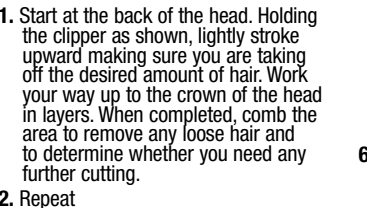
Allow the clipper to cut through the hair without moving it too quickly. Moving the clipper too quickly may create a pulling sensation. Use short strokes when cutting, and initially use the longest trimming guide. You can always use a closer trimming guide later if you want a closer cut.



## Usage Tips

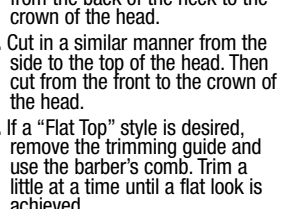
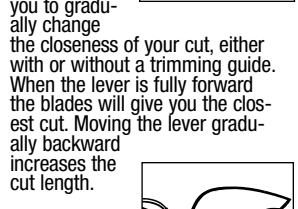
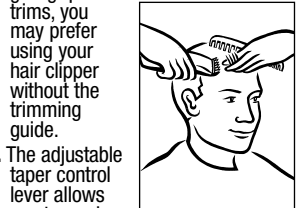
### How to Give a Haircut

- Start at the back of the head. Holding the clipper as shown, lightly stroke upward making sure you are taking off the desired amount of hair. Work your way up to the crown of the head in layers. When completed, comb the area to remove any loose hair and to determine whether you need any further cutting.
- Repeat the same procedure for each side of the head. Make sure the length of the hair is trimmed to the same length on both sides of the head.
- To cut the hair at the top of the head, hold the hair between your fingers and cut a small amount at a time. Cut from the front to the back.
- Remove the trimming guide and replace with either the left or right ear guide. The shorter guide teeth are designed to be toward the ear. Move the clipper from the back of the head to the front. This creates a tapered effect around the ears and back of the neck.
- The final trim can be made with the hair clipper or the included scissors. Make sure to check over the entire head for any uneven areas. For styled hair or



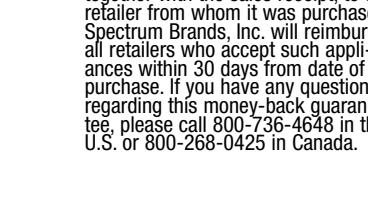
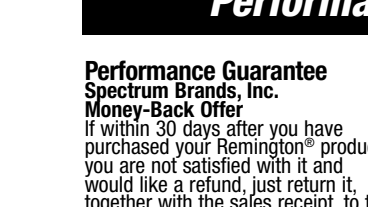
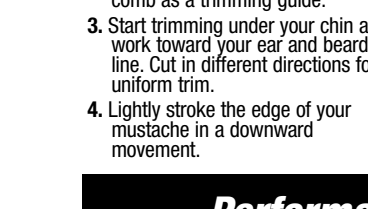
### Very short styles

- Using the 1/2" (12mm) trimming guide, hold the comb flat against the head and move the hair clipper from the back of the neck to the crown of the head.
- Cut in a similar manner from the side to the top of the head. Then cut from the front to the crown of the head.
- If a "Flat Top" style is desired, remove the trimming guide and use the barber's comb. Trim a little at a time until a flat look is achieved.



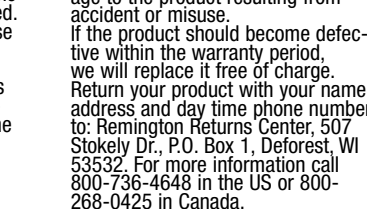
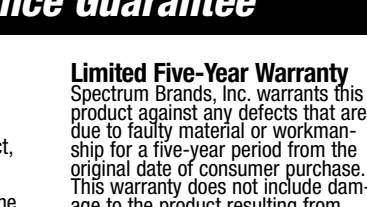
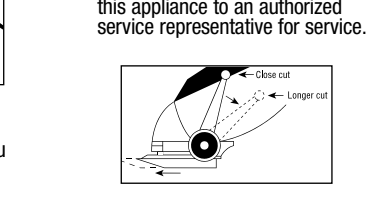
### Trimming Beards & Mustaches

- Comb your beard in the direction it grows.
- Determine the length you want the beard to remain, and fit the appropriate trimming guide. Remember the 1/8" (3mm) guide will give you the shortest beard while the 1" (25mm) will give you the longest. If you want a longer beard you can use the styling comb as a trimming guide.
- Start trimming under your chin and work toward your ear and beard line. Cut in different directions for a uniform trim.
- Lightly stroke the edge of your mustache in a downward movement.



### Maintenance

- Do not wrap the cord around the appliance.
- This appliance does not contain any user-serviceable parts. Bring this appliance to an authorized service representative for service.



### This warranty does not cover products damaged by the following:

- Accident, misuse, abuse or alteration of the product
  - Servicing by unauthorized persons
  - Use with unauthorized accessories
  - Connecting it to incorrect current and voltage
  - Wrapping cord around appliance causing premature wear & breakage
  - Any other conditions beyond our control
- No responsibility, obligations, or liability is assumed for the installation or maintenance of this product.

SPECTRUM BRANDS, INC. SHALL NOT BE RESPONSIBLE FOR ANY INCIDENTAL SPECIAL OR CONSEQUENTIAL DAMAGES RESULTING FROM THE USE OF THIS PRODUCT. ALL IMPLIED WARRANTIES, INCLUDING BUT NOT LIMITED TO IMPLIED WARRANTIES OF FITNESS AND MERCHANTABILITY, ARE LIMITED IN DURATION TO FIVE YEARS FROM DATE OF ORIGINAL PURCHASE.

## Warranty

This warranty gives you specific legal rights, and you may also have other rights that vary from state to state. Some states do not allow the exclusion or limitation of incidental or consequential damages, or limitations on how long an implied warranty lasts, so the above limitations and exclusions may not apply to you.

U.S. residents: To order accessories, contact us at 800-392-6544, visit us at [www.RemingtonProducts.com](http://www.RemingtonProducts.com), or visit your local retailer. Canadian residents: To order accessories, please call 800-268-0425 or visit us at [www.RemingtonProducts.com](http://www.RemingtonProducts.com)

KEEP ORIGINAL SALES RECEIPT AS PROOF OF PURCHASE FOR WARRANTY PURPOSES.

Questions or comments: Call 800-736-4648 in the U.S. or 800-268-0425 in Canada or visit [www.RemingtonProducts.com](http://www.RemingtonProducts.com)

REMINGTON is a Registered Trademark of ROVICAL, Inc., a subsidiary of Spectrum Brands, Inc.

© 2012 ROVICAL, Inc. Job # 2012-6-27\_146 8/12

Dist by: Spectrum Brands, Inc. Madison, WI 53711

Dist by: Spectrum Brands Canada, Inc., 4180 Sladeview Crescent, Mississauga, ON L5L 0A1

Manufactured in Remington's specifications in the PRC

T22-0000566 120VAC 60Hz



