

# REMINGTON®

HC1080 Series  
*Use and Care Guide*



Save Money  
Cut Hair at Home

**Register Your New Product Today!**

By registering your new Remington® product, you will receive special offers.  
Register online at: [RemingtonProducts.com](http://RemingtonProducts.com)

## IMPORTANT SAFETY INSTRUCTIONS

When using an electrical appliance, basic precautions should always be observed, including the following. Read all instructions before using this appliance.

### DANGER

To reduce the risk of electric shock:

- Do not reach for an appliance that has fallen into water. Unplug it immediately.
- Do not use while bathing or in the shower.
- Do not place or drop into water or other liquid.
- Do not place or store this appliance where it can fall or be pulled into a tub or sink.
- Always unplug this appliance from the electrical outlet immediately after using.
- Unplug this appliance before cleaning it.

### WARNING

To reduce the risk of burns, fire, electric shock or injury to persons:

- This appliance is for household use only.
- An appliance should never be left unattended when it's plugged in.
- Close supervision is necessary

when this appliance is used by, on, or near children or persons with special needs.

- Use this appliance only for its intended use as described in this manual. Do not use attachments not recommended by Spectrum Brands, Inc.
- Keep the cord away from heated surfaces.
- Never operate this appliance if it has a damaged cord or plug, if it is not working properly, if it has been dropped or damaged, or if it has been dropped into water. If any of these things happen, return the appliance to a Remington authorized service center for examination and repair.
- Never drop or insert any object into any of the appliance's openings.
- Do not use outdoors or operate where aerosol (spray) products are being used, or where oxygen is being administered.
- Always store this appliance and cord in a moisture-free area. Do not store it in temperatures exceeding 140°F (60°C).
- Do not plug or unplug this appliance when your hands are wet.
- Do not use an extension cord or a voltage converter with this appliance.

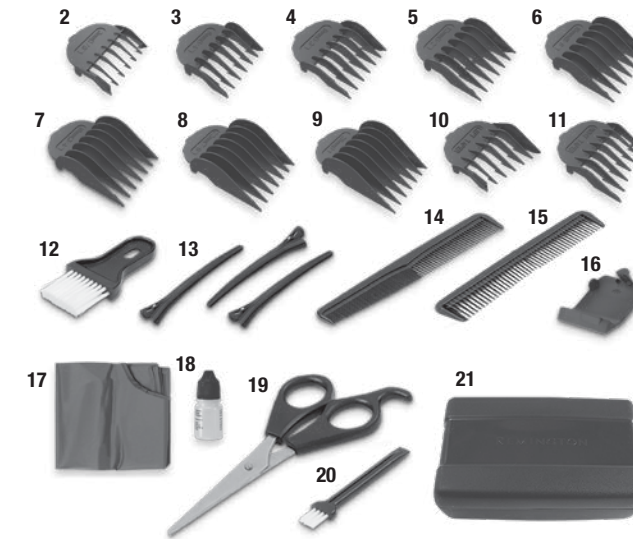
- Do not place this appliance on any surface while operating.
- This appliance has a polarized plug (one blade is wider than the other). As a safety feature, this plug will fit in a polarized outlet only one way. If the plug does not fit fully in the outlet, reverse the plug. If it still does not fit, contact a qualified electrician. Do not attempt to defeat this safety feature.
- Do not use this appliance with a damaged or broken cutting unit, as injury may occur. Always make certain blades are aligned properly.
- This clipper is designed for use with 120 Volts AC, 60 HZ electrical outlets available on the continent of North America. It does not have worldwide voltage adaptability. Do not connect the clipper to a higher voltage than indicated, as it may result in personal injury and/or damage to the clipper.

## SAVE THESE INSTRUCTIONS

## Product Features

Congratulations on your purchase of one of the finest hair clippers available today. Your Remington® hair clipper is designed to perform dependably and efficiently for years, helping you maintain a range of hair styles.

Part	HC1080	HC1081	HC1085
1. Hair Clipper	X	X	X
2. 1/8" (3mm) Guide Comb	X	X	X
3. 1/4" (6mm) Guide Comb	X	X	X
4. 3/8" (9mm) Guide Comb	X	X	X
5. 1/2" (12mm) Guide Comb	X	X	X
6. 5/8" (16mm) Guide Comb	X	X	X
7. 3/4" (18mm) Guide Comb		X	X
8. 7/8" (22mm) Guide Comb	X	X	X
9. 1" (25mm) Guide Comb		X	X
10. Left Ear Guide	X	X	X
11. Right Ear Guide	X	X	X
12. Neck Brush		X	X
13. Sectioning Clips	2	4	3
14. Barber Comb	X	X	X
15. Styling Comb		X	X
16. Blade Guard	X	X	X
17. Barber's Cape			X
18. Oil Bottle		X	X
19. Scissors	X	X	X
20. Cleaning Brush	X	X	X
21. Storage Case	X	X	X



## How to Use

### Line Cord Safety Tips

NOTE: This appliance has a polarized plug (one blade is wider than the other). As a safety feature, this plug will fit in a polarized outlet only one way. If the plug does not fit fully in the outlet, reverse the plug. If it still does not fit, contact a qualified electrician. Do not attempt to defeat this safety feature.

1. To insert plug, grasp it firmly and guide it into outlet.
2. To disconnect the appliance, grasp the plug and remove it from outlet. Do not pull or yank on the cord or appliance. **Do not wrap the cord around the appliance.**

### Blade Care

The life of your clippers will depend on frequency of use, care, hair type and condition. The hair clipper has blades that require additional oiling. To maintain the blades in peak condition apply oil after every haircut. Place a few drops of the included oil on the teeth of the blades. Turn the clipper on for fifteen seconds then turn off. Wipe away any excess oil.

### Before Cutting Hair

1. Make sure your hair clipper is running smoothly, with a slight vibration.
2. Place a cape or towel around the neck of the person whose hair is being trimmed or cut.
3. This person should be seated so that the top of their head is at your eye level.
4. Comb the hair as it is normally styled.
5. Comb out all knots and tangles.
6. Ensure the hair is dry. Hair clippers perform best with dry hair, making it easier to see how much hair is being cut.
7. Hold the hair clipper in the palm of one hand with your thumb resting firmly on the top of the hair clipper. This grip provides comfortable cutting control. Although the hair clipper may be used with the left or right hand, using it right-handed allows you to access the taper lever more easily.

### To Attach Trimming Guides

1. Select the trimming guide that matches the length you want the hair to be after the cut. The trimming guides are numbered and marked. See preceding chart to determine which combs your model contains.
2. While the clipper is off, hold the trimming guide with the teeth up. Hook the front edge of the comb to the teeth of the clipper blade. Then push the back of the comb down until it snaps in place.



## Usage Tips

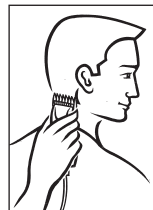
### Giving a Comfortable, Even Cut

Start with the longest trimming guide. You can always use a closer trimming guide later if you want a closer cut.

Use short strokes when cutting and allow the clipper to cut through the hair without moving it too quickly. Moving the clipper too quickly may create a pulling sensation.

### How to Give a Haircut

1. Start at the back of the head. Holding the clipper as shown, lightly stroke upward making sure you are taking off the desired amount of hair. Work your way up to the crown of the head in layers. When completed, comb the area to remove any loose hair and to determine whether you need any further cutting.

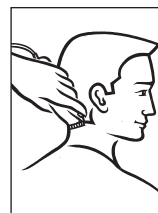


2. Repeat the same procedure for each side of the head. Make sure the length of the hair is trimmed to the same length on both sides of the head.



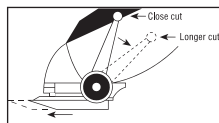
3. To cut the hair at the top of the head, hold the hair between your fingers and cut a small amount at a time. Cut from the front to the back.

4. Remove the trimming guide and replace with either the left or right ear guide. The shorter guide teeth are designed to be toward the ear. Move the clipper from the back of the head to the front. This creates a tapered effect around the ears and back of the neck.



5. The final trim can be made with the hair clipper. Make sure to check over the entire head for any uneven areas. For styled hair or giving quick trims, you may prefer using your hair clipper without the trimming guide.

6. The adjustable taper control lever allows you to gradually change the closeness of your cut, either with or without a trimming guide. When the lever is fully forward the blades will give you the closest cut. Moving the lever gradually backward increases the cut length.



### Very short styles

1. Using the 1/2" (12mm) trimming guide, hold the comb flat against the head and move the hair clipper from the back of the neck to the crown of the head.
2. Cut in a similar manner from the side to the top of the head. Then, cut from the front to the crown of the head.
3. If a "Flat Top" style is desired, remove the trimming guide and use the barber's comb. Trim a little at a time until a flat look is achieved.



### Trimming Beards and Mustaches

1. Comb your beard in the direction it grows.
2. Determine the length you want the beard to remain, and fit the appropriate trimming guide. Remember the 1/8" (3mm) guide will give you the shortest beard while the 1" (25mm) will give you the longest. If you want a longer beard you can use the comb as a trimming guide.
3. Start trimming under your chin and work toward your ear and beard line. Cut in different directions for a uniform trim.
4. Lightly stroke the edge of your mustache in a downward movement.



## Cleaning and Maintenance

### Cleaning and Maintaining Your Clipper

#### After each use:

- Remove the accumulated hair from the cutters.
- **Do not submerge the trimmer in water.**

#### Cleaning Cautions:

- Do not use liquid cleaners on the cutters or harsh or corrosive chemicals on the cutter casing.
- Unplug the trimmer from the power outlet when not in use and when cleaning.

#### Storage

- Always store this appliance and cord in a moisture-free area.
- Do not wrap the cord around the appliance.
- Do not store in temperatures above 140°F.

#### Blades

- It is recommended to oil the blades after every use.
- Place 1 to 2 drops of lubricating oil on the moving blade and turn on the trimmer. The oil should distribute on its own. Wipe off any excess oils.

### Troubleshooting

#### Clipper cutters do not move:

- The cutting unit may be dirty and clogged. Clean the unit as directed in the Cleaning and Maintenance section.
- Always clean the blade and trimmer before storing.
- Always place the blade protection guard back on the clipper blades before storing.
- This appliance does not contain any user-serviceable parts.

U.S. residents: To order accessories, contact us at 800-392-6544, visit us at RemingtonProducts.com, or visit your local retailer.

## Performance Guarantee

### Limited Five-Year Warranty

Spectrum Brands, Inc. warrants this product against any defects that are due to faulty material or workmanship for a five-year period from the original date of consumer purchase. This warranty does not include damage to the product resulting from accident or misuse.

If the product should become defective within the warranty period, we will replace it free of charge. Return your product with your name, address and day time phone number to: Remington Returns Center, 507 Stokely Dr., DeForest, WI 53532. For more information call 800-736-4648 in the U.S.

#### This warranty does not cover products damaged by the following:

- Accident, misuse, abuse or alteration of the product
- Servicing by unauthorized persons
- Use with unauthorized accessories
- Connecting it to incorrect current and voltage
- Wrapping cord around appliance causing premature wear and breakage
- Any other conditions beyond our control

No responsibility, obligation, or liability is assumed for the installation or maintenance of this product.

**SPECTRUM BRANDS, INC. SHALL NOT BE RESPONSIBLE FOR ANY INCIDENTAL, SPECIAL OR CONSEQUENTIAL DAMAGES RESULTING FROM THE USE OF THIS PRODUCT. ALL IMPLIED WARRANTIES, INCLUDING BUT NOT LIMITED TO IMPLIED WARRANTIES OF FITNESS AND MERCHANTABILITY, ARE LIMITED IN DURATION TO FIVE YEARS FROM DATE OF ORIGINAL PURCHASE.**

### Performance Guarantee

#### Spectrum Brands, Inc. Money-Back Offer

If within 30 days after you have purchased your Remington® product, you are not satisfied with it and would like a refund, just return it, together with the sales receipt, to the retailer from whom it was purchased. Spectrum Brands, Inc. will reimburse all retailers who accept such appliances within 30 days from date of purchase. If you have any questions regarding this money-back guarantee, please call 800-736-4648 in the U.S.

### Remington Guarantees Satisfaction After 30 Days!

#### Remington Men's Shave and Groom 60-Day Money Back Guarantee\*

If within 60 days after purchasing any Remington® branded Men's Shave and Groom product, you are not completely satisfied and would like a refund, return it with the original dated sales receipt directly to Remington and receive a full refund.\*\* For questions concerning the money-back guarantee, please call 800-736-4648 in the U.S.

\*Applies to U.S. customers' returns only.

\*\*Terms and conditions apply.

#### Terms and Conditions

1. Refund will be in the form of a check issued in U.S. Dollars and will be provided only if all Terms and Conditions are met.
2. The following items must be returned to Remington and postmarked no later than 60 days after purchase of the Remington branded Men's Shave and Groom product:
  - a. The Remington product;
  - b. The original sales receipt indicating price and date purchased; and
  - c. The completed 60-day money back guarantee form located at **RemingtonProducts.com/60day**.
3. In addition, Remington, in its discretion, must determine that the returned product was used in accordance with the instruction booklet (included with the product at the time of purchase).
4. Returns should be mailed prepaid (no collect returns accepted) to:  
Remington 60-Day MBG  
507 Stokely Drive, Box 1  
DeForest, WI 53532
5. Refund does not include postage costs for the return of the product, but will include applicable taxes paid by customer, if any.
6. No responsibility will be accepted for late, lost, stolen, misdirected or damaged product.
7. Please allow 4–6 weeks to receive your refund by check.

This warranty gives you specific legal rights, and you may also have other rights that vary from state to state. Some states do not allow the exclusion or limitation of incidental or consequential damages, or limitations on how long an implied warranty lasts, so the above limitations and exclusions may not apply to you.

KEEP ORIGINAL SALES RECEIPT AS PROOF OF PURCHASE FOR WARRANTY PURPOSES.

**Questions or comments:**  
Call 800-736-4648 in the U.S. or visit **RemingtonProducts.com**

© Registered Trademark of Spectrum Brands, Inc.

© 2018 Spectrum Brands, Inc. 24861 12/18

Part No. **T22-0005567-C**

Dist. by: Spectrum Brands, Inc. Middleton, WI 53562

Made in China.

120VAC, 60Hz TYPE: HC1080

