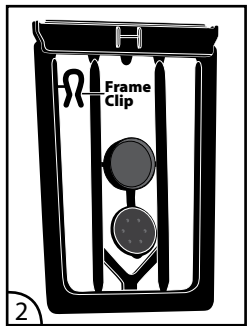
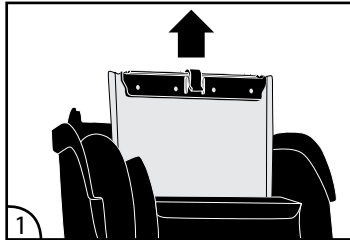




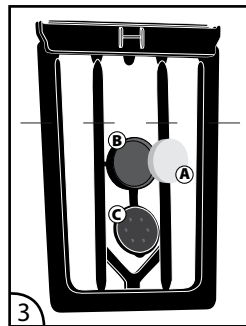
# BIO-Bag<sup>®</sup> Cartridges with Stay Clean<sup>™</sup> Technology Unassembled

## INSTRUCTIONS:

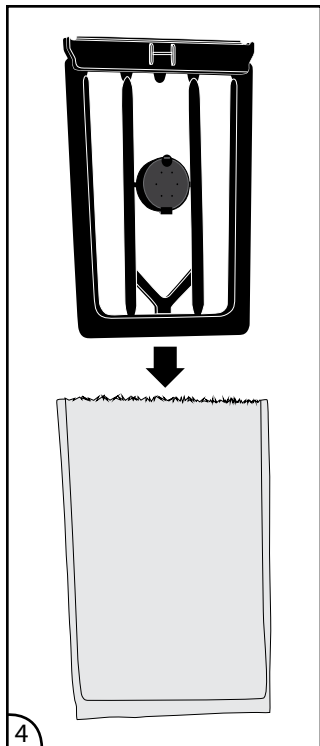
1. Remove old cartridge (keep the frame and clip for reuse).



2. Take the Stay Clean<sup>™</sup> Cartridge Frame and, for the first use, twist the clip off the frame.

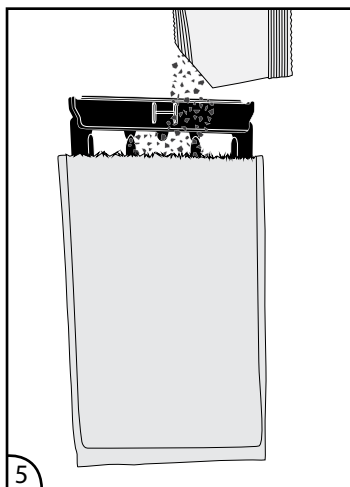


3. Remove tablet from pouch, insert the tablet (A) into the tablet holder (B), and secure the cap (C).

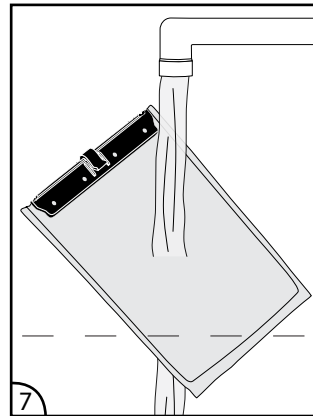
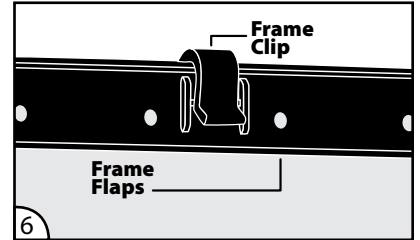


4. Slide the filter bag over the frame.

5. Add one packet of Ultra-Activated<sup>®</sup> carbon.

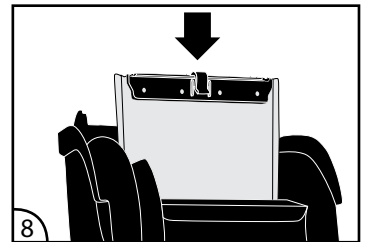


6. Press the frame flaps down over the top of the filter bag and press the clip down over the flaps.



7. Rinse filter cartridge under room temperature tap water until water runs clear.

8. Insert rinsed cartridge into filter, ensuring it fits into designated channels.



9. Replace filter cartridge and tablet monthly (use the Tetra<sup>®</sup> My Aquarium App to schedule a reminder).

10. For aquariums established less than one month, use a regular Bio-Bag<sup>®</sup> or the Stay Clean<sup>™</sup> starter cartridge that came with your filter.

**NOTE:** When medicating your aquarium, remove carbon from cartridge